



Crawford Village
Primary School & Nursery

THE CRAWFORD CHRONICLE

Friday 16th December 2022

Class Attendances

9 th December 2022			16 th December 2022		
C1	C2	C3	C1	C2	C3
100%	95.9%	97.1%	85%	94.5%	96.5%

School
Target
96%

A note from Class 3...

We have had a busy few weeks in Class 3. Last Tuesday, a lot of our older children were called upon to chat to our special visitors; they represented themselves and our school impeccably and with great pride. Before that, we kicked off December in full festive spirit by spreading Christmas kindness around school. Each day, two children have been selected to make others around school smile with kind messages and chocolate coins. We have been designing our Christmas cards using buttons and Miss Tose handed out personalised recipe books to the winners of the 'Come dine with me' competition. We also loved practising for our Christmas concert and thoroughly enjoyed performing it for the rest of the school and our wider school family.



Coming up @ Crawford... 2023!

Diary Dates

Mon	Bank Holiday - School Closed
Tues	Lunchtime - Choir / Library After School - History Detectives
Wed	Lunchtime - Spanish / Chicken Club After School - Craft Club
Thurs	Lunchtime - Brass / Chess
Fri	Whole school assembly Lunchtime - Coding Club
Mon	Lunchtime - School Council / Well-being / Recorders
Tues	Lunchtime - Choir / Library After School - History Detectives
Wed	Lunchtime - Spanish / Chicken Club After School - Craft Club
Thurs	Lunchtime - Brass / Chess
Fri	Whole school assembly Lunchtime - Coding Club

School Holiday Dates

16th December 2022
Break up for Christmas
Holidays 1.30pm

3rd January 2023
School reopens 8.50am



To all our
**Crawford School
Family**

From all
**Crawford School
Staff**

Award Winners



Star of the Week

C1 Mason
C2 Charlie
C3 Class 3

C1 All of Class 1
C2 All of Class 2
C3 All of Class 3



Pride Award

C2 Hattie
C3 Eleanor



Super Writers

C2 Finley
C3 Alfie

Housepoints

EAGLES



1st

RAVENS



2nd

OWLS



3rd

PHOENIX



4th

Find us on social media...



Crawford Village Primary School



@crawford_school

Don't forget to log on to your child's Seesaw account. You will find work that they do in school, photographs and videos that are not uploaded to social media and you can upload photos from home. Please ask if you are having any problems logging on and we will help if we can.

Do not forget to check out our school website! You will find details of upcoming events, term dates, important key documents and policies plus lots of information and photographs showcasing what we have been doing in school.





WEST LANCS HAF
HOLIDAY - ACTIVITY - FUN

FREE ACTIVITIES AND HOLIDAY CAMPS

19th -22nd December
Dance, Football, Music, Cinema trips, Pantomime and much more...

Bookings close
9am on
Tues 13th
December

West Lancs HAF is back!!
We are delighted to be able to offer eligible children **FREE** places at a variety of holiday camps and events this Christmas. Places are currently only available to eligible children in receipt of benefit related free school meals and will be allocated on a first come first served basis. We would therefore encourage you to sign up for these places as soon as possible.

All activities will include a **FREE MEAL** as part of the offer.

You can access, sports, drama, dance, music, arts and crafts, football coaching, tennis and much, much more! So don't miss out and book your place now!!

To see what is on offer, please visit the West Lancs HAF website at www.westlancashirehaf.com through which you can book your child's place.

FREE Food Parcels
If your child is in receipt of benefits related free school meals then you are eligible to order a **FREE** food parcel. Limited number available. To find out more and to order your food parcel please visit www.westlancashirehaf.com

Logos for Lancashire County Council, Department for Education, and Public Health England.

Instagram: @westlancs_haf
Facebook: @westlancashireHAF
Twitter: #lancshaf

We would like totake this opportunity to say a huge thank you to Mrs Hogarth for all the incredible hard work that went into organising and running the Christmas shops for the children. We could not have done this without you.

We would also like to say a big thank you to all the members of our incredible PTA who have worked so hard this half-term, especially in the run up to Christmas.

If your child is in their last year of nursery you can now apply for their primary school place at:

<https://www.lancashire.gov.uk/children-education-families/schools/apply-for-a-school-place/apply-online-for-a-school-place/>

It's quick and easy - and you will receive email confirmation of your application.

You must apply even if you already have siblings in school.

If you live in Lancashire you can include out of area preferences on your online application.

If you do not live in Lancashire you should apply to the council that you pay your council tax to. The closing date is the same for all councils.

The closing date for primary reception applications for September 2023 is 23:59 on 15 January 2023.

SCHOOL ADMISSIONS PRIMARY SOUTH

Do you have a child starting primary school in September 2023 and living in Lancashire?

APPLY NOW!

WWW.LANCASHIRE.GOV.UK/SCHOOLS
or give us a call on 01772 532109

CLOSING DATE: 15 JANUARY 2023

You must apply even if an older brother or sister is already at the school, or the school is linked to your child's nursery.

HAVE YOUR SAY
Between 1 October and 31 January schools are consulting with you to make sure admission arrangements meet future needs. To find out more please visit www.lancashire.gov.uk and search 'School Admission Policies'.

www.lancashire.gov.uk/schools

Lancashire County Council



DID YOU KNOW?

Why is Tahiti in the news?

Because of a new coral reef discovered just off the coast of the island...

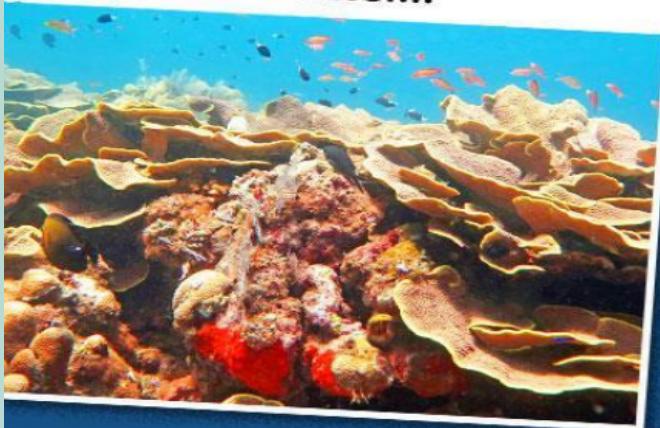


...Unlike many other reefs, it is unharmed by climate change!

THE DAY
NEWS TO OPEN MINDS

The warming and pollution of the sea often cause bleaching of the coral reefs as they die. But the Tahitian reef is healthy!

Scientists think that it's because the reef is so deep underwater...



...It lies 70m below the surface and is made up of beautiful rose-shaped corals!

THE DAY
NEWS TO OPEN MINDS